

# Circuit Rider

A monthly publication of the First United Methodist Church of Glendale

April 2016

## Love Directs Compassion...

**W**hen I feel myself becoming calloused and harsh toward the struggling people in our world, I remember Jesus identifies those in need as his brothers and sisters. (*Matthew 25:31-46*)

**W**hen on the brink of casting blame or acting disrespectful to another person, I recall Jesus' words to his disciples. "I give you a new commandment: Love each other. Just as I have loved you, so you also must love each other." (*John 13:34, CEB*)

**E**ach time I feel the peace that comes from knowing I am forgiven, I remember Jesus' first words to the disciples after the resurrection. "Peace be with you...If you forgive anyone's sins, they are forgiven; if you don't forgive them, they aren't forgiven." (*John 20:19-23, CEB*)

**E**ach time I'm invited to be with those grieving the death of a beloved family member or friend, I look to the Spirit of God to give me words that bring comfort and hope.

**W**hen I doubt the presence of Christ and the power of God, I recall Jesus' words to Thomas, who, after seeing Jesus with his own eyes and touching him with his own hands, proclaims, "My Lord and my God!" Jesus replies, "Do you believe because you see me? Happy are those who don't see and yet believe." (*John 20:28-29, CEB*)

**A**ll these things are a reminder that true happiness comes from trusting beyond the things of this world. Jesus comforts his disciples with these words, "My peace I give you. I

"By this all people will know that you are my disciples, if you have love for one another."

JOHN 13:35. ESV



give to you not as the world gives. Don't be troubled or afraid." (*John 14:27, CEB*)

The more we trust God with every aspect of our lives, the more our lives are directed by love. The more our lives that are ordered by love, the greater our joy and the more complete our peace.

Striving, with you, to trust more in God,

—Pastor Kim

(See the worship schedule on pg. 2)



## First United Methodist Church of Glendale

7102 N. 58th Drive · Glendale, AZ 85301

Phone: 623-939-1409 • Fax: 623-236-9284

Email: [rebecca@glendalefirstumc.com](mailto:rebecca@glendalefirstumc.com) · Web: [www.glendalefirstumc.com](http://www.glendalefirstumc.com)

Office Hours: Monday–Thursday 9:00 am—3:00 pm; Friday 9:00 am—1:00 pm

### Sunday Schedule

8:00 am (Lay-led Communion) • 9:00 am Worship • 11:11 am Worship

10:10 am Sunday School Classes for all ages

Rev. Kim Gladding, Senior Pastor

April 3: **Second Sunday of Easter**

*Forgiveness Follows Peace...*

Read: John 20:19-23

April 10: **Third Sunday of Easter**

*Faith Produces Happiness*

Read: John 20:24-29

April 17: **Fourth Sunday of Easter**

*Love Directs Compassion*

Read: John 21:15-17

April 24: **Fifth Sunday of Easter**

*Good Works Never Die...*

Read: John 10: 22-30 (Also read: Acts 9:36-43)

May 1: **Sixth Sunday of Easter**

*Listening to Jesus Opens Our Eyes...*

Read: Acts 9:10-20 (Also read Acts 9:1-9)

May 8: **Ascension Sunday/Mother's Day**

**Festival of the Christian Home**

*When Jesus Ascends, the Spirit Comes Down*

Read: Acts 1:1-11

May 15: **Pentecost**

Guest Preacher

May 22: **Trinity/Peace With Justice/Heritage Sunday**

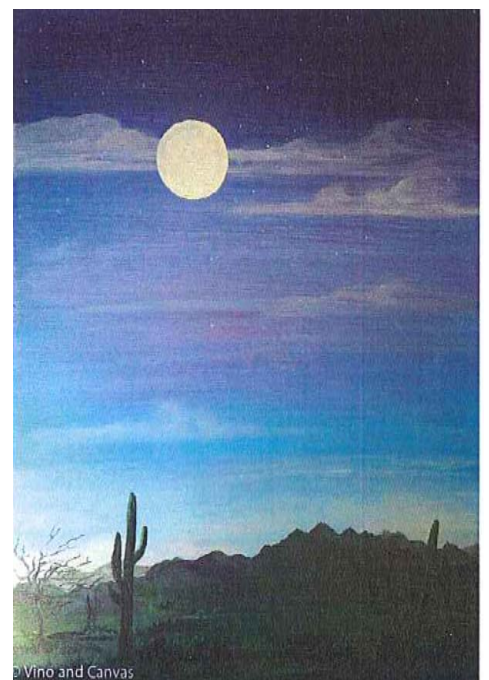
Guest Preacher



## take PART and Paint for a Cause!

Our youth group is sponsoring a May Day Paint on May 1st to raise funds to cover transportation costs for the mission trip this summer. The cost is \$35/painter, which includes: 16"x20" canvas, aprons, brushes, paint, palettes, napkins, an instructor, etc. Please join us in the Fellowship Hall no later than 1:30 pm to check-in and enjoy snacks, drinks (non-alcoholic) and fellowship. We will be painting from 2:00-4:00 pm. No experience is necessary! All skill levels are welcome!

For more information on this event, our mission trip, and/or our youth group activities, please contact Karen at (623) 297-8738.



We will be painting "Sonoran Moonrise"

Each year, the Central West District prays for all the churches in its jurisdiction for one month.

In April, please pray for:

**Dove of the Desert UMC, Glendale**  
**Epworth UMC, Phoenix**  
**Nuevo Pacto, Phoenix (Epworth UMC)**  
**Faith UMC, Phoenix**

## Coffee Hour Hosts

We have made some changes to the Coffee Hour schedule for 2016. The following is the updated list for April & May 2016:

**Apr. 3: Host Group Needed**

**Apr. 10: The Miller Family**

**Apr. 17: Girl Scouts**

**Apr. 24: UMM**

**May 1: Finance/Trustees**

**May 8: UMM (Mother's Day)**

**May 15: Esther Circle**

**May 22: Brad Riner Office**

**May 29: Missions Team**

Including April 3, there are still some dates needing to be filled — if your group or committee would be willing to host one coffee hour, or one additional coffee hour, please call Rebecca in the office at 623-939-1409, or see Rosie Miller.



## Brad Riner Assistance Office News

Those of us at the Riner Assistance Office would like to send out a giant "Thank You!" to those in our congregation who heard our request for specific donations. We have received many donations of toilet paper, toothbrushes, and toothpaste. Thank you for helping so quickly! We are also equally as thankful for your generous cash donations. The Office could not remain open without you.

For example, last week we helped Darius prepare for a job interview at Sky Harbor Airport with some professional clothing, a bus ticket, and hygiene items such as a toothbrush, toothpaste, soap and shampoo. Your donations are truly making an impact!

We are in continual need of those items and would like to ask, at this time, for specific donations of:

— small unused bottles of shampoo

— Spaghettios/Ravioli (any Chef Boyardee-type products) with popping tops\*

\*Please note. We cannot distribute any items that have been opened or have expired.

Again, we sincerely thank you for your continued support in our efforts to care for our neighbors.

Many Blessings,

— *Sherry Paddie*, Brad Riner Assistance Office Administrator

***And the King will answer them, 'Truly, I say to you, as you did it to one of the least of these my brothers, you did it to me.'* - Matthew 25:40**

## A Retreat for Family Caregivers

Duet invites all people who have responsibilities for again loved ones to an uplifting retreat set for Saturday, April 23 from 9:00 am—2:30 pm at Christ Evangelical Lutheran Church, 918 S. Litchfield Road, Goodyear. You can take better care of your loved one if you first take care of yourself! **No charge; lunch is included.** RSVP to Duet at 602-274-5022.



**Duet**  
Partners In Health & Aging

## Church News and Notes

For more information, contact the church  
office 623.939.1409 or  
[rebecca@glendalefirstumc.com](mailto:rebecca@glendalefirstumc.com)

### Staff-Parish Training

Pastors and SPRC members are invited and encouraged to attend SPRC Training offered on Sat., April 9 at Lakeview UMC, 10298 W Thunderbird Road, Sun City. The training event, led by District Superintendent Neil Leftwich, will be 9:30 am– 12:30 pm. Refreshments will be provided (but no lunch).

This training is targeted for Pastors, SPRC Chairs, and all members of SPRC. New members of SPRC are especially encouraged to participate.

Please register with Carla Whitmire, [cwhitmire@dscumc.org](mailto:cwhitmire@dscumc.org) or 602-798-8236, in the District Office right now to attend the SPRC training.

Again, there is no cost! Again, this is important for you and your church! I hope to see you at the SPRC Training Event.

—Rev. Neil Leftwich, Central West District Superintendent

## Capital Campaign Update

The Capital Campaign Committee was formed to raise money to support the many projects that the Trustees need to complete to keep our church beautiful and functional. The committee extends a hearty thank you to all who have participated in our fundraisers!

At the end of 2015, the committee had three fundraisers running at the same time. There is only one running right now, and that is the Mile of Quarters campaign. With your help, we have done very well, and we are almost there! There are 8 city blocks to a mile, and each block is 660 ft long. We have only 1½ blocks to go! We have made it to Frier Drive. Please join us in adding enough quarters to go the last 995 feet to get to Northern Avenue. Our total raised to date is \$13,391.49—we only have \$3,108.51 to go. We can do it!

The HoneyBaked Ham sales went well—many of those who purchased gift cards reported that the ham, turkey, sandwiches and sides were delicious! We sold over \$1,800 worth of cards, surpassing our \$1,000 goal, and profit to the church was \$369.32.

The calendar fundraiser was designed to bring in monies from outside the church through the sale of ads. Most of the money made on this project did in fact come from outside the church. We are also grateful to you, our congregation, for purchasing ads, birthday and anniversary spots, and the calendars themselves. This project yielded a profit of \$1,457.01.

**We have a few calendars left which we are now offering FREE.** You might want to take some and give them to family, friends or anyone that you want to see a photo of our beautiful church. You may also want to put some at your apartment or other business where our church can be seen. Who knows, we might gain a new member or two from those seeing our church and its people.



## ***A Chance to Remember\****

The Memoirs Class at FUMC Glendale is an opportunity for personal interaction and sharing of experiences. Initiated seven years ago by Shelley Mosley, the class meets the second Friday of each month, and although the class is scheduled for one hour, it usually runs overtime because attendees have so many ideas and experiences to share.

Every month students are given a topic to write up for the next session. Topics have included: family Easter traditions, favorite hobbies or talents, a realized or unrealized dream or wish, a person who has been an inspiration or role model, travels. The list goes on and on. Back in class students take turns reading their pieces aloud. This is followed by profuse encouragement and questions. Often, details discussed will trigger similar or new memories of listeners and the discussion continues. There is a lot of "Aah, I remember that..." and "Did you ever wear....?" There are lots of smiles and laughs, and sometimes an excerpt brings all to tears.

Occasionally, the class begins with a quick write, a short paragraph about a given subject. These are then read and critiqued by fellow students and the facilitator. Usually the feedback serves as encouragement to strive for more detail and focus on the senses.

The class ranges in size from a half dozen to a dozen, and the ages range from 50 to 91 years. That adds up to lots of memories. Most of the students are retired or semi-retired. All share a love of writing, but the styles and ideas and experiences are very diverse and entertaining. Earl, for example, often writes a short piece about his German ancestry. Erma and Olive, both former teachers, can write page after page about their childhood chores and pranks growing up in the prairie states.

At least one class member, Jo Ellen Lock, has published her memoirs (*The Three Percenters*, Xulon Press, 2014). Shelley Mosley has published several of her life experiences in *Chicken Soup for the Soul*. However, that is not a major objective of the class. All of the participants agree that they derive a lot of positive feelings, fellowship, catharsis, and inspiration from the class. It is a chance to remember and share personal memories with persons of like faith.

—Eva Ndavu

*\*Previously published in the March 2016 issue of the Central West District Cactus Patch Newsletter.*

*Editor's Note: The Memoirs Class meets on the 2<sup>nd</sup> Friday of each month at 10:00 am in Room 101. It is open to anyone who would like to attend.*





## ***Mingus Mountain Summer Camp Registration***

It is time to start thinking about summer camp at Mingus. Campers who went last year will be getting information in the mail. You can also go to the website, [dscamps.org](http://dscamps.org), to read about the camps and to register online. If you have questions about the camp, contact Dina Reid at the Camping Ministries Office 602-892-2815 or [dreid@dscumc.org](mailto:dreid@dscumc.org). We will be doing scholarships for our kids attending camp so be sure to give us copies of your registration forms so we can include you in our scholarship support program. We need your registration information by the end of April so we know how many we will be able to help with scholarships. Most of the camps cost \$250 per camper. Posters and brochures will be on display in the Sunday School rooms.



### ***Youth Cabin Assistants***

Youth aged 16 and 17 may attend camp as Cabin Assistants at some of the Elementary Camps. This is a camping experience intended to help develop leadership skills. Cost is \$175—register online at [dscamps.org](http://dscamps.org).

### ***New This Year!***

New at Mingus this year is Genesis Camp which is a 2-night camp for first-time campers accompanied by a parent. This camp is for children in grades 1-3 and runs June 2-4. New for Junior and Senior High campers is the Tower Challenge Course, built on and around a tower with interior spiral staircase, and includes various challenges and even zip lines.

### ***Bus to Mingus Mountain***

This summer, transportation to Mingus Mountain Camp is offered on the new camp bus, which will pick up Phoenix-area campers at 12:00 pm at the United Methodist Center (1550 E Meadowbrook Ave) on the first day of camp. The bus will leave Mingus Mountain at the close of camp and reach the United Methodist Center in Phoenix at 12:00 pm. The cost for each one-way bus ride to or from camp is \$25. Space on the bus is limited. Here at First Glendale, we ask parents and volunteers to help get our kids to and from camp but the camp bus is another good option if needed.

### ***Support for Summer Campers***

We need volunteers to help with transportation to and from Mingus Mountain located near Prescott Valley. It is about a 2-hour drive from Glendale. Campers must sign in at camp starting at 2:00 pm on the first day of camp and must be picked up by 10:00 am the last day of camp.

Financial support for our campers is also crucial. Each camp costs \$250 per student. We have supported our campers for many years and with your help, we will continue the scholarship program this year. All donations, large or small, help us send our kids to camp. Use your giving envelope for your donation and mark the line that says "OTHER" with the words CAMP SUPPORT.

Any questions, please contact the church office at 623-939-1409,x2 or [rebecca@glendalefirstumc.com](mailto:rebecca@glendalefirstumc.com).

## **2016 Desert Southwest Annual Conference Mission Project**

**We can do better than this  
for foster care teens  
who are aging out of the system**



Approximately one out of every nine youth in foster care are aging out of the system. This represents hundreds of young adults throughout the communities in Arizona, Nevada, and California. These youth have very few resources and few support systems. While there are organizations that are helping, one area where there is no support is move-in costs like filling the pantry with groceries for the first time. This year's Desert Southwest Annual Conference mission project is to fill these empty pantries with food.

Churches are invited to buy \$25 gift cards from their local grocery stores and to supply a favorite recipe with each gift card. Young adults aging out of the foster care system moving into their first homes will have their pantries filled with the UMC's love and perhaps their first dinner will include that favorite recipe. We will work with foster care organizations to set up delivery in our local communities. An organization list for both local and regional drop off points will be published soon. In the meantime, we know the generous spirit of our churches will begin as we collect recipes and gift cards.

Pray for the young people that are aging out of foster care. Pray for the facilities that are supporting them in their journey to become self sufficient. Then give to help stock their pantries.



**Save the Date!**  
**Cave Quest**  
**Vacation Bible School**  
**June 6-11, 2016**  
**6:00—8:30 pm**



*April 10-16, 2016 is National Volunteer Recognition Week. In honor of all our dedicated church volunteers, we are reprinting a poem, "Ode to a Volunteer." Our sincere thanks to all of you that give of your time to our church and to others...*

Many will be shocked to find  
 When the day of judgment nears  
 That there's a special place in  
 Heaven set aside for volunteers.

Furnished with big recliners,  
 Satin couches and footstools  
 Where there's no committee chair,  
 No group leaders or carpools.

Telephone lists will be outlawed  
 But a finger snap will bring  
 Cool drinks and gourmet dinners,  
 And rare treats fit for a king.

You ask, who'll serve the privileged few  
 And work for all they're worth?  
 Why, those who reaped benefits  
 And not once volunteered on earth.

**- Author Unknown**

Deadline for the May issue is  
 April 15. Your items for the  
 newsletter should be submitted  
 to the church office by 3:00 pm.  
 email:  
 office@glendalefirstumc.com  
 fax: 623.236.9284

NON-PROFIT ORG  
 U.S. POSTAGE  
 PAID  
 Glendale, AZ  
 Permit No. 22

**First United Methodist Church**  
 7102 North 58th Drive  
 Glendale, AZ 85301-2434  
**RETURN SERVICE REQUESTED**